



Stewart Place, Station Road, Ware SG12 9UN

Guide price £250,000



2



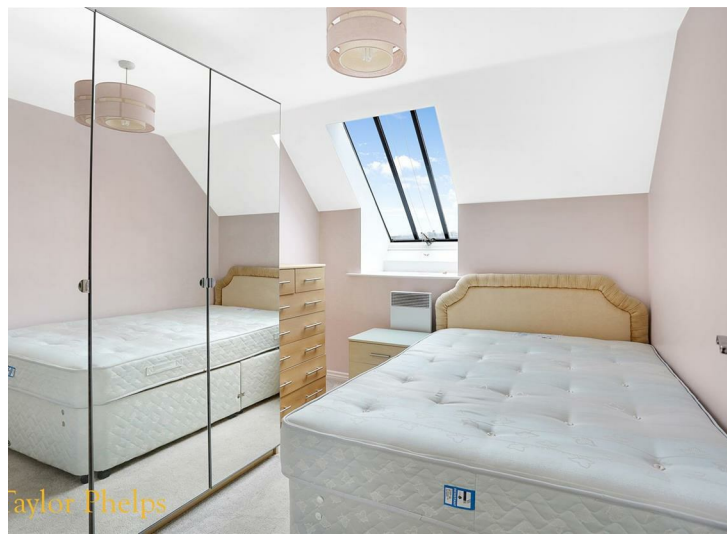
2

Taylor Phelps

Estate Agency

Taylor Phelps
Estate Agency

Taylor Phelps are pleased to offer this two bedroom apartment positioned in Ware town centre close to the high street and station which serves both Herford East and London Liverpool Street! This apartment benefits from a modern kitchen, two bathrooms and residents parking. Available Chain Free

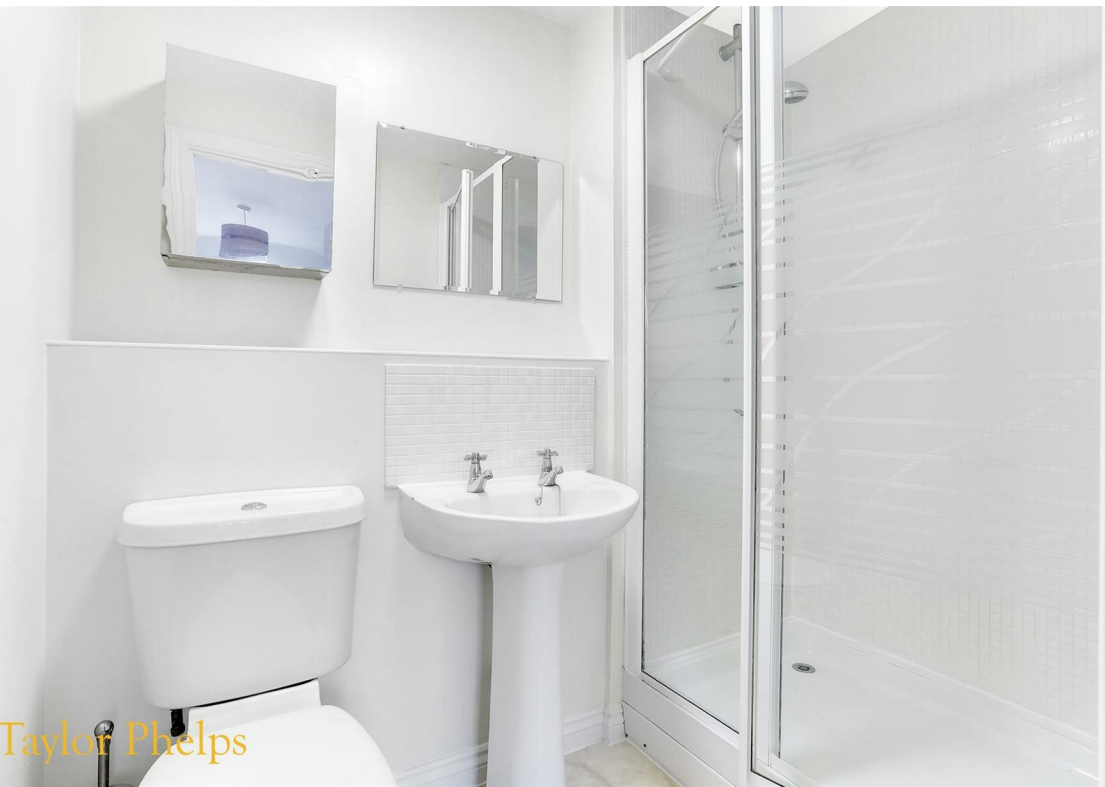




Taylor Phelps



Taylor Phelps

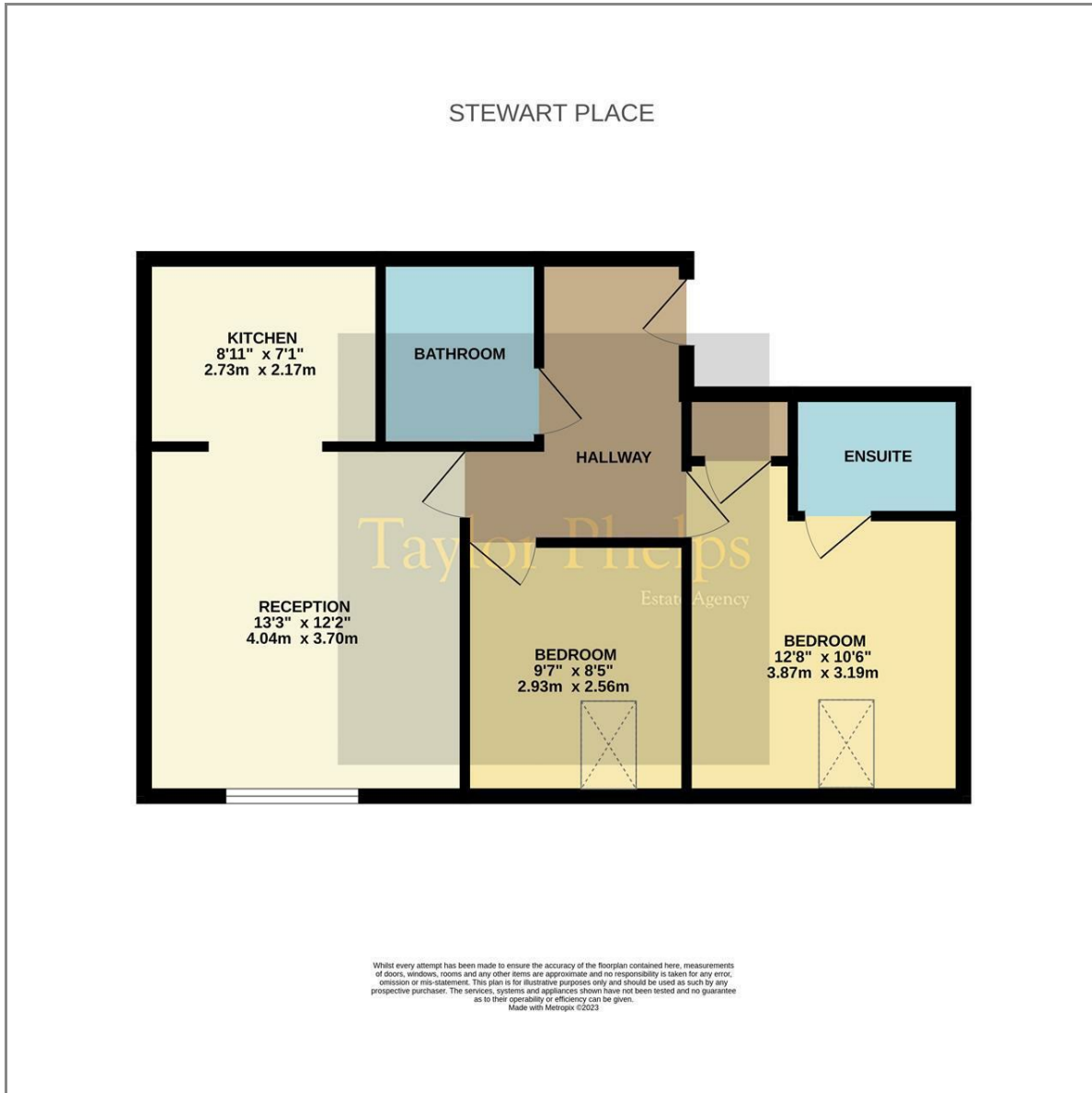


Taylor Phelps

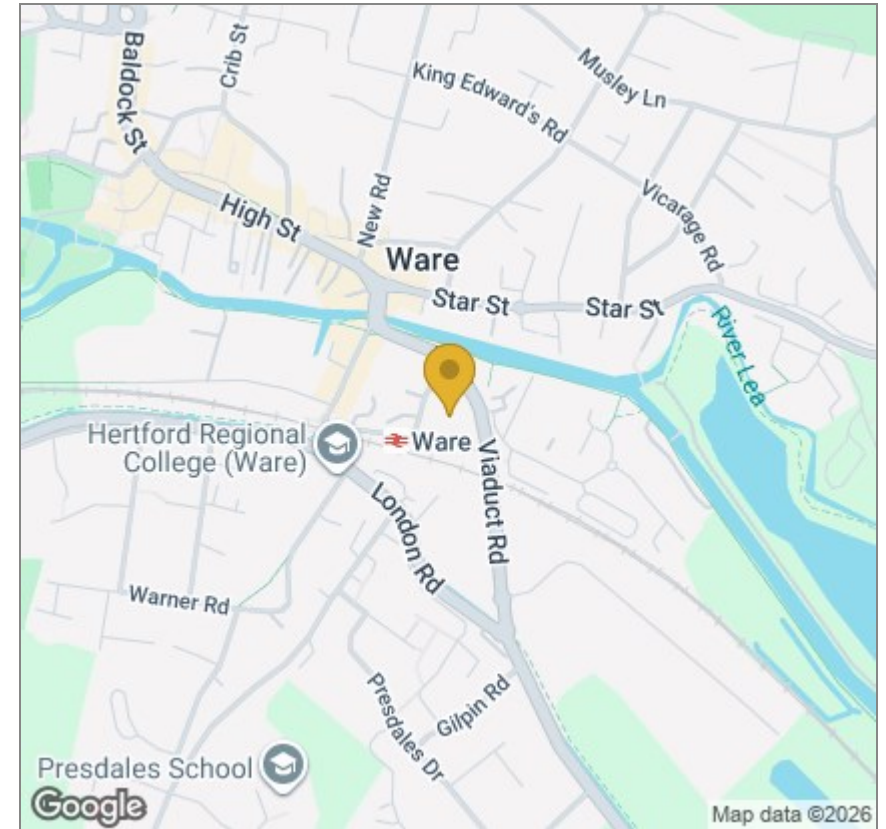


Taylor Phelps

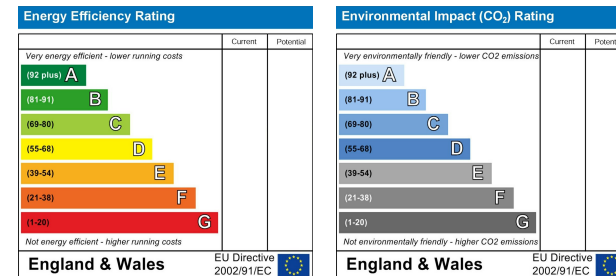
Floor Plan



Area Map



Energy Efficiency Graph



These particulars, whilst believed to be accurate are set out as a general outline only for guidance and do not constitute any part of an offer or contract. Intending purchasers should not rely on them as statements of representation of fact, but must satisfy themselves by inspection or otherwise as to their accuracy. No person in this firm's employment has the authority to make or give any representation or warranty in respect of the property.